



GERRY E. STUDDS  
**STELLWAGEN BANK**  
NATIONAL MARINE SANCTUARY



## Dive Sites

### Stellwagen Bank

Fifteen percent of the sanctuary or 126 square miles is shallower than 130 feet. Much of this area lies atop Stellwagen Bank. The top of the bank ranges in depth from 65 in the south to an average of 110 feet as you move north. The seafloor is comprised of sand waves and gravel plains interspersed with boulder fields.

### Jeffreys Ledge

On the northern edge of the sanctuary, rocky ridges on the southern edge of Jeffreys Ledge rise to within 115 feet of the surface. Interspersed between the rocky ridges are areas of sand and mud.

### Sanctuary Hill

In the sanctuary's northeast corner, Sanctuary Hill rises from 325 feet to 115 feet and is topped with solid granite.

### Shipwrecks

The fishing vessel *Josephine Marie* lies on the southern end of Stellwagen Bank in 100 feet of water. The 80-foot steel-hulled stern trawler sank in 1992 and now lies upside down.

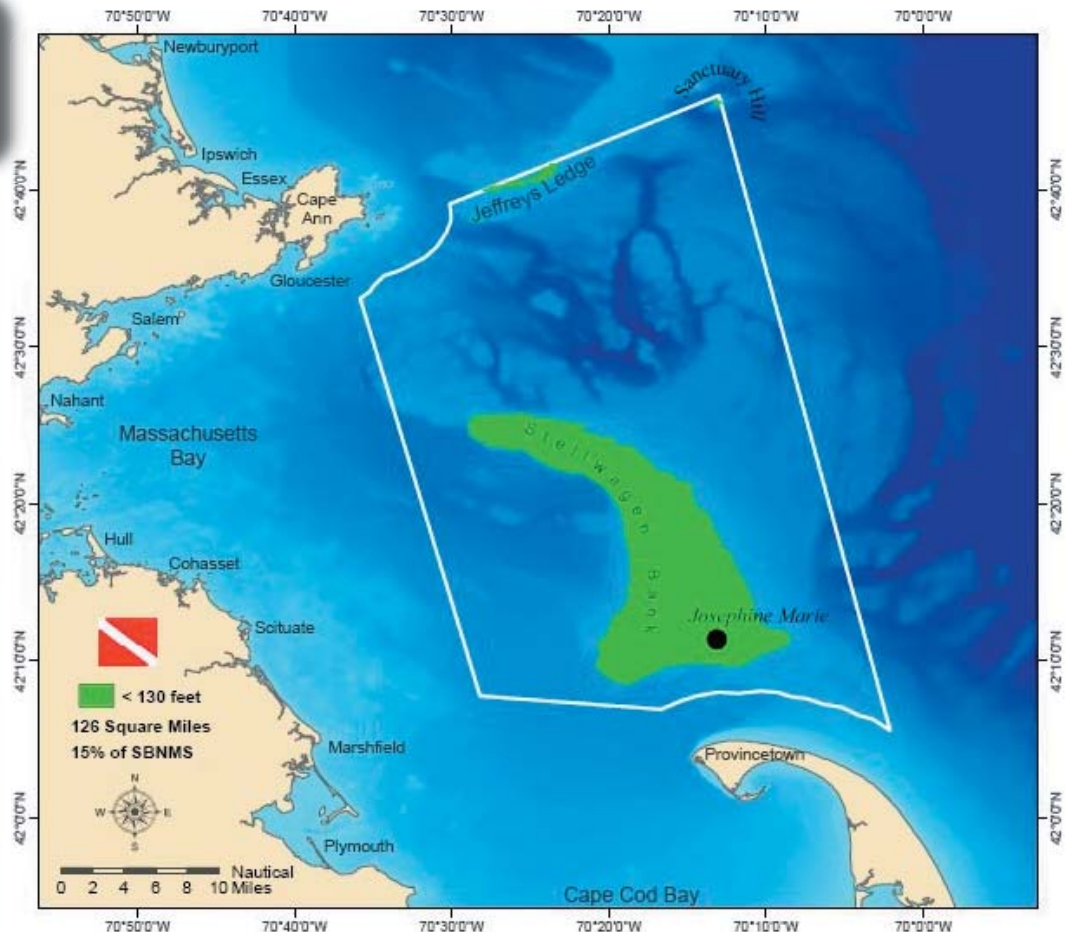
#### *Josephine Marie* Coordinates

(two formats provided):

Decimal Degrees = N 42.18208 W  
70.22443

Degrees Minutes = N 42 10.925 W  
70 13.466

## Diving in the Sanctuary



While many of New England's most popular dive spots are relatively close to shore, some excellent diving can be found further afield. Stellwagen Bank National Marine Sanctuary offers divers a chance to explore different environments at the mouth of Massachusetts Bay, where strong currents and exposed waters create challenging dive conditions.

Divers visiting the sanctuary must be aware of regulations that protect historical resources. Divers are prohibited from moving, removing or injuring, or attempting to move, remove or injure, as well as possess a sanctuary historical resource. Divers are not permitted to grapple a historic shipwreck, drop a down line directly onto a historic shipwreck, or tie a down line onto any part of a historic shipwreck.



Left: *Josephine Marie* in Gloucester, MA courtesy of John Harper

Right: *Josephine Marie*'s propeller presents an excellent picture opportunity. NOAA/SBNMS

